

Smoke Detector

SD -50



Best Detectors, Best Service



C-910C, Bupyeong Woolim Lion's Valley,
#425, Cheongcheon-Dong, Bupyeong-Gu, Incheon, Korea
TEL: +82-32-623-7507 FAX: +82-32-623-7510
E-mail: sales@gasdna.com | Web: www.gasdna.com

[Introduction]

SD-50, the smoke detector with built-in micro processor, receiving signal from sensor and comparing it with preset alarming value, if it exceeds, transmits the relay output to be connected to PLC/DDC.

Usually, the other smoke detectors designed only for fire alarm cannot be used for industrial use because it cannot secure enough accuracy and stability.

However, SD-50 accommodating highest accurate ionization sensor and industrial detector technology, secures best accuracy and stability at the same time.

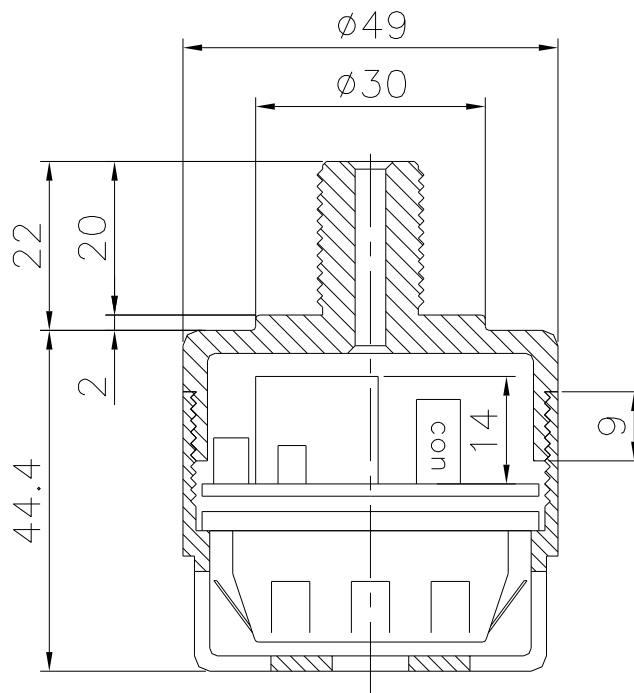
[Features]

- ◆ Low concentrated smoke detection: SD-50 is designed to secure safety for high sensitive industrial automation equipment which should be the best choice for detection up to 1% smoke density.
- ◆ Digital process: Built-in micro processor realizes various artificial intelligent functions which enable optimized detection and alarm system to maximize the detection effectiveness.
- ◆ Ionization sensor: Sensing the slight alterations of electric currency in sensing chamber when smoke meets the air ionized by small amount of radioactive material enables the highest & fastest accurate detection even up to 1% smoke density.

[Specification]

Model	SD - 50
Detection principle	Ionizations smoke chamber
Detection method	Diffusion
Response time	Within 3 seconds
Output	Relay A (DC30V 1A), relay B
Input	DC 22V~26V
Currency consumption	Max 25mA
Housing	ABS
Operation temperature / humidity	-20 °C ~ 65 °C / 0 ~ 95% RH (Non-Condensing)
Process	Digital Process

■ SENSOR UNIT



[Wiring]

+	POWER(+) : 24VDC	
-	POWER(-) : GND	
B	—⊙	NC (NORMAL CLOSE)
COM	—/	RELAY COM
A	—⊙	NO (NORMAL OPEN)

